

# Installation Guide

## Shower Arm, External Pipe Connection

02-009612

### Intended use

The Shower Arm for external pipe connection is designed to facilitate the installation of the T-safe Easy-Fix Shower Filter or the T-safe Medical Fixed Shower Filter.

*Note: Before beginning the installation, ensure that all required parts are included.*

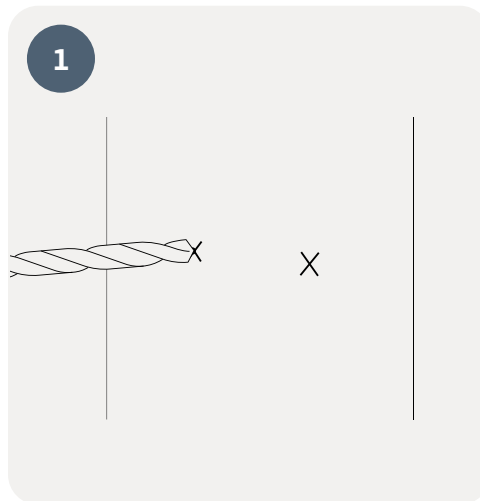
### Parts included:

- 3 mm Allen Key
- 2 screws
- 2 wall plugs
- 1 shower arm
- 1 base plate

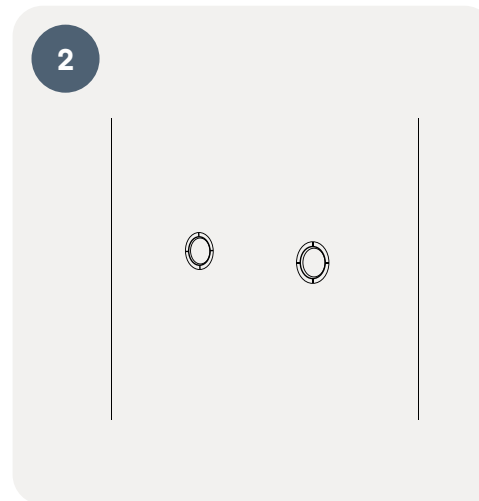
### T-safe A/S

Gydevang 1  
3450 Allerød, Denmark

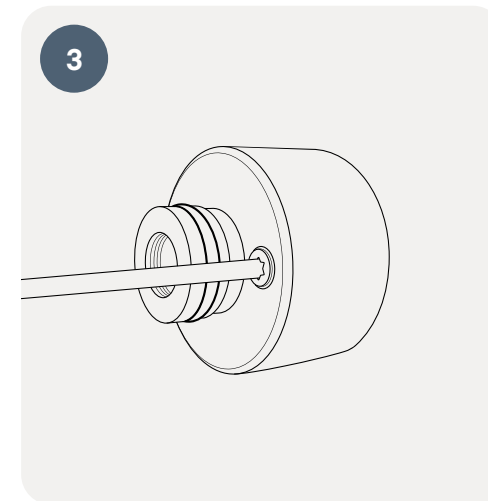
+45 48 17 22 82  
info@t-safe.com  
www.t-safe.com



Installing the Base: Mark and drill two holes using an 8 mm drill bit.

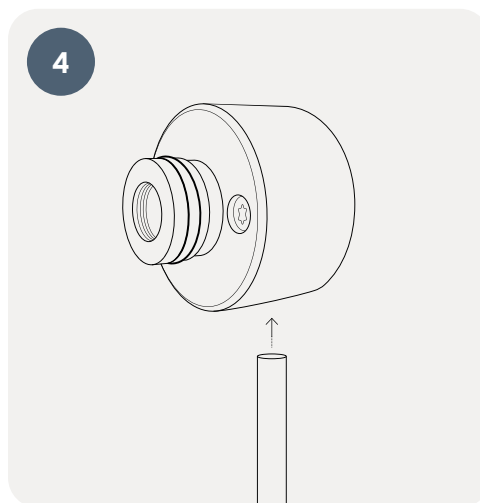


Insert the wall plugs, ensuring they are flush with the wall.



Secure the base plate to the wall using the provided screws.

*Note: The base plate can be positioned to connect to the water supply pipework from either the top or bottom.*



Connect the water supply pipework.



Attach the shower arm to the base plate and secure it using the grub screw.



Connect the T-safe Easy-Fix Shower Filter (02-092031) or the T-safe Medical Fixed Shower Filter (02-092034) to the shower arm using the 1/2" threaded connection.