

Installation Guide

Shower Panel Adapter f. Delabie

01-990290

Intended use

The shower panel adapter is intended to facilitate the installation of the T-safe Easy-Fix Shower Filter or the T-safe Medical Fixed Shower Filter to a range of Delabie shower panels/heads.

The shower panel adapter is compatible with the following Delabie shower panels:

- **SPORTING 2**
- **TEMPOSOFT**
- **TEMPOMIX**
- **SECURITYTHERM**
- **Mechanical shower panel**

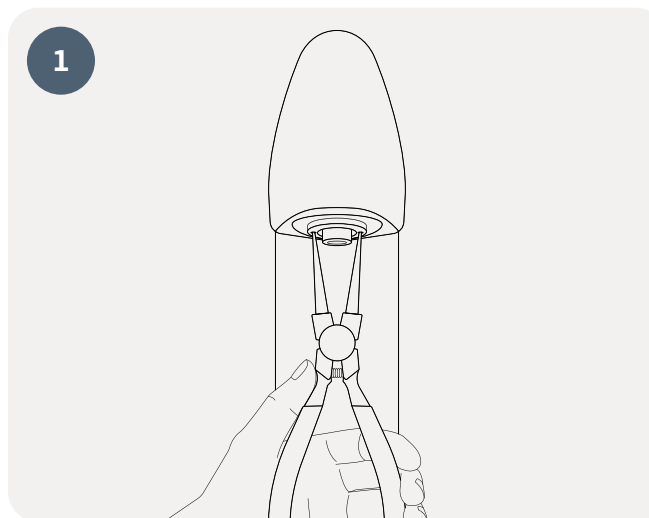
The shower panel adapter is compatible with the following Delabie shower heads:

- **ROUND Fixed Shower Head**
- **TONIC JET Shower Head**
- **GYM Shower Head**

T-safe A/S

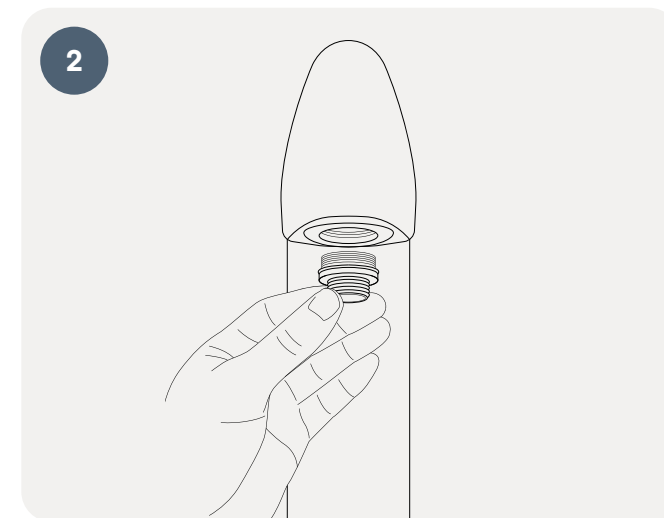
Gydevang 1
3450 Allerød, Denmark

+45 48 17 22 82
info@t-safe.com
www.t-safe.com

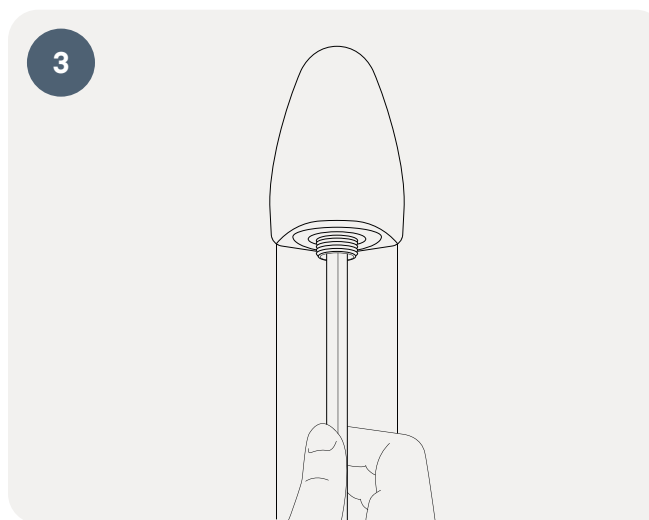


Remove the spray plate from the Delabie shower panel/head using a lock ring plier.

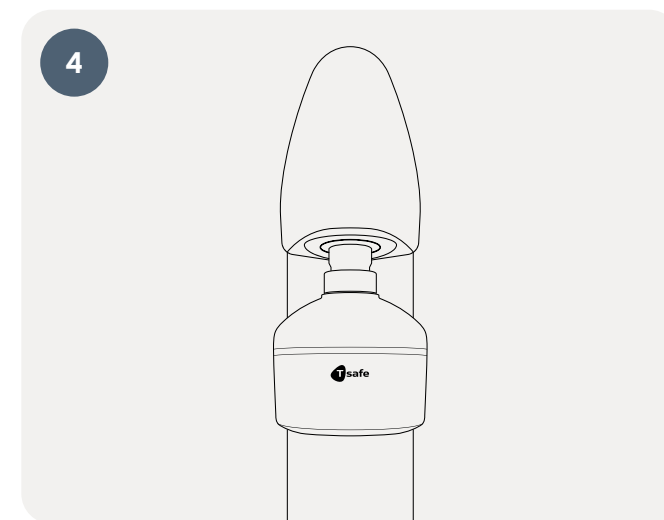
Keep the spray plate in a safe place so it can be reinstalled later if necessary.



Insert the adapter into the Delabie shower panel/head by screwing it in loosely by hand.



Secure it tightly using a clean Allen key.



Connect the T-safe Easy-Fix Shower Filter (02-092031) or the T-safe Medical Fixed Shower Filter (02-092034) to the 1/2" thread.