



## **Pro Hand Shower Filters**



## Pro Hand Shower Filters

### Description

The filter of the T-safe Pro Water Filter range is based on hollow fiber membrane technology and is specifically designed to remove bacteria such as, but not limited to, *Legionella pneumophila* from tap water in order to prevent infections in commercial settings.

T-safe Pro Hand Shower Filters are equipped with a female ½" thread. The filters are supplied with a water flow regulator, which protects the filters against sudden water pressure peaks.

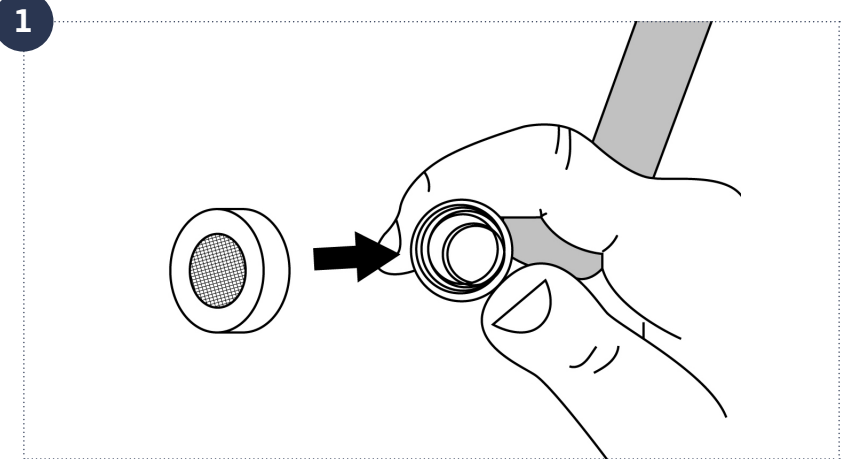
T-safe Pro Hand Shower Filters will effectively retain bacteria for a maximum period of up to 92 days, within the limitations of use as described herein.

This IFU covers the following products:

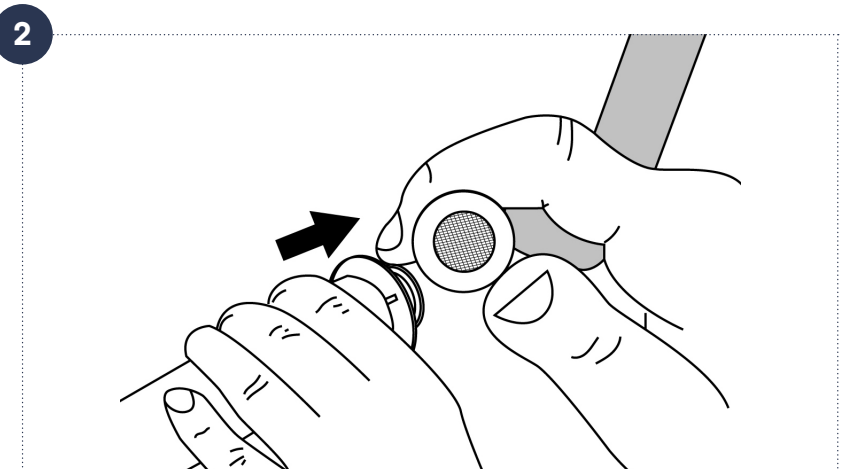
Item	Code
Chrome Hand Shower Filter	02-803102
White Hand Shower Filter	02-803103
Emergency Hand Shower Filter	02-803112
Replacement Filter	02-000077

### Installation

1. The enclosed gasket is for the shower hose and is to replace the previously installed gasket. This is done every time a new T-safe filter is mounted, in order to ensure that the coupling is always tight.

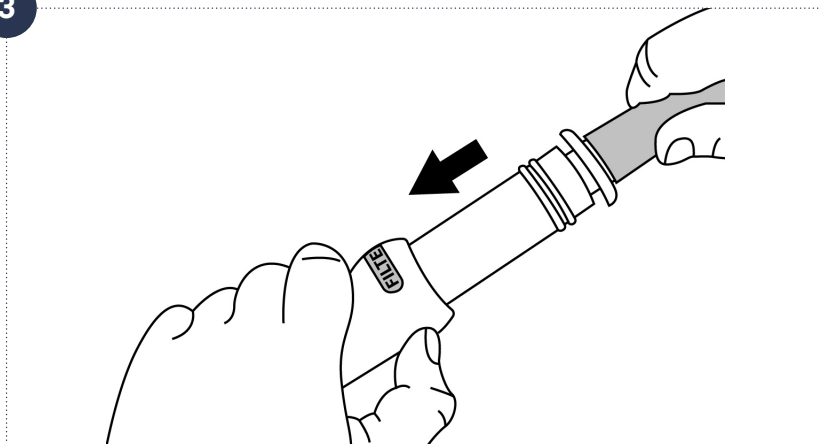


2. Fasten the shower hose tightly to the filter.



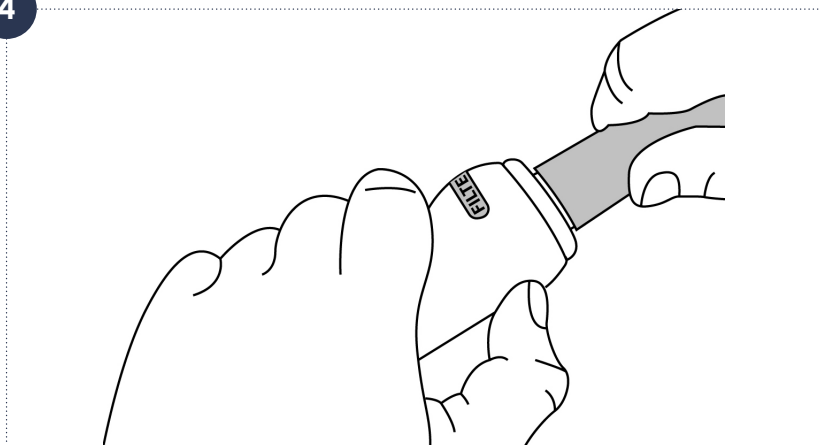
- Release the filter button by pressing down on the handle. Then push the filter into place in the handle.

3



- Once the filter is in place in the handle, the filter button is pushed back into place, after which the filter is securely attached. The filter shower is now ready for use.

4



## Cleaning

If professional cleaning procedures are in place, the external surfaces of the filter product may be cleaned using a new disposable wipe. Extra care should be taken to not contaminate any outlet of the filter product. Do not disconnect the filter during cleaning.

## Exposure to Chemical and Thermal Water Treatment

The filter can tolerate the following continuous disinfection treatments:

- 30 ppm chlorine dioxide
- 15 ppm free chlorine (hypochlorite)
- 10 ppm ozone
- 1 ppm hydrogen peroxide
- 1 ppm monochloramine

## Shock Treatment:

- Up to 1000 ppm free chlorine for 1 hour at room temperature
- pH 12 for 1 hour at room temperature
- 1000 ppm peracetic acid for 2 hours at 60° C

The filter can tolerate thermal disinfection up to 6 times in the lifetime of the filter under the following conditions: 70° C for 5 minutes.

## Disposal

The filter cartridge and non-metallic parts can be disposed with ordinary waste in accordance with applicable local regulations under the waste category number 180104 and in accordance to EU Directive 75/442/EEC.

## Storage – non-commissioned filter

The product must be stored at temperatures between 5° C and 40° C and at a humidity of max. 60 %. Expiry date: See label on the packaging or marking on the product.

## Precautions

- Do not use the filter if the package is open or damaged, or filter is visually damaged
- Do not disconnect the filter during the period of use
- Avoid mechanical impact and do not strike the filter with heavy or metallic objects, as this may damage the filter
- The outlet of the filter should not come into direct contact with skin or hair
- The filter must not be used continuously with water temperatures above 60° C. Optimal working range 10° C - 45° C
- The filter cannot tolerate pressure above 5 bar.
- If the filter is subjected to excessively high water pressure, this will cause the filter to collapse (sudden decrease in water flow). The filter must then be discarded
- The filter cannot be "backwashed"

- The contamination level and the amount of filter-blocking particles and substances in the water might reduce the lifetime of the filter
- The filter cannot be rinsed or cleaned in a dishwasher or autoclave
- The filter must be discarded if the expiry date has passed
- Do not modify or make changes to the filter or the adaptor

## NOTE

- Do not use the water for contact lenses
- The quality of the water is not suitable for pharmaceutical use
- The filter will neither alter the taste or odor nor the chemical composition in the water and does not cause any changes in concentration of salts, metals, lime scale, chemicals, pesticides and dyes

*No liability for misprints or typographical errors*



**T-safe A/S**

Gydevang 1  
3450 Allerød  
Denmark

t: +45 48 17 22 82  
e: [info@t-safe.com](mailto:info@t-safe.com)

**[t-safe.com](http://t-safe.com)**